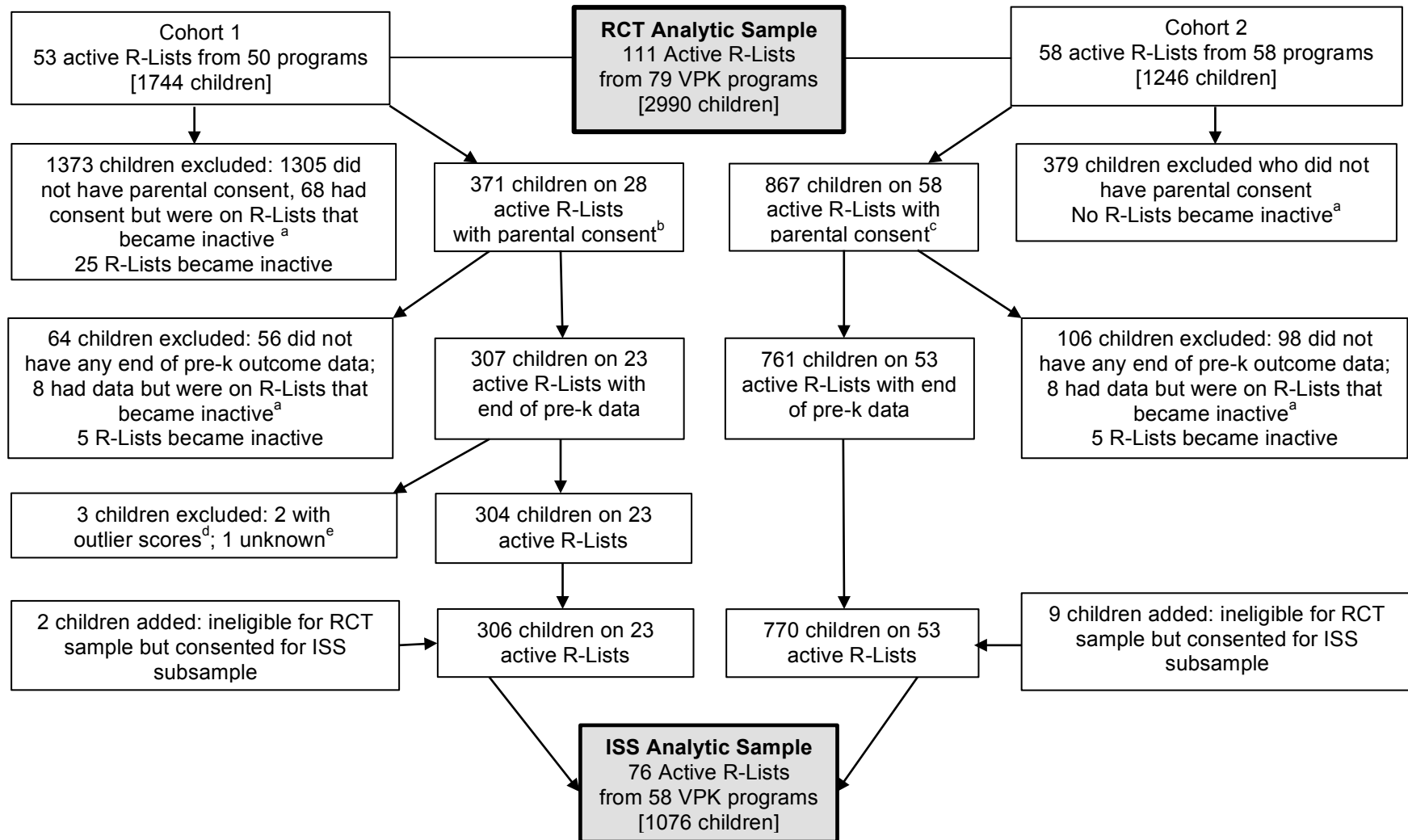


Construction of the ISS Analytic Subsample



^a R-Lists became inactive for use in the ISS subsample when they no longer had at least one consented child who attended VPK and one who did not attend.

^b Of the 337 children in Cohort 1 ineligible for the RCT analytic sample, parental consent for participation in the ISS subsample was obtained for 11 children.

^c Of the 347 children in Cohort 2 ineligible for the RCT analytic sample, parental consent for participation in the ISS subsample was obtained for 72 children.

^d Distributions of propensity scores created from baseline variables were compared for the Cohort 1 VPK participant and nonparticipant groups in a preliminary screening. Two children with outlier scores at opposite extremes of those distributions were trimmed from the sample on the basis of that screening.

^e Child was initially identified as ineligible for the ISS subsample, but that may have been an error. There is insufficient information to resolve this ambiguity.